

155 Acre Mol. Kendall Co. Il., Buffalo Twp.



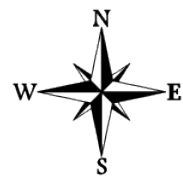
©2021 AgriData, Inc.



Map Center: 41° 30' 13.07, -88° 35' 32.39

0ft 497ft 993ft

18-35N-6E
Kendall County
Illinois



10/12/2021

Maps Provided By:



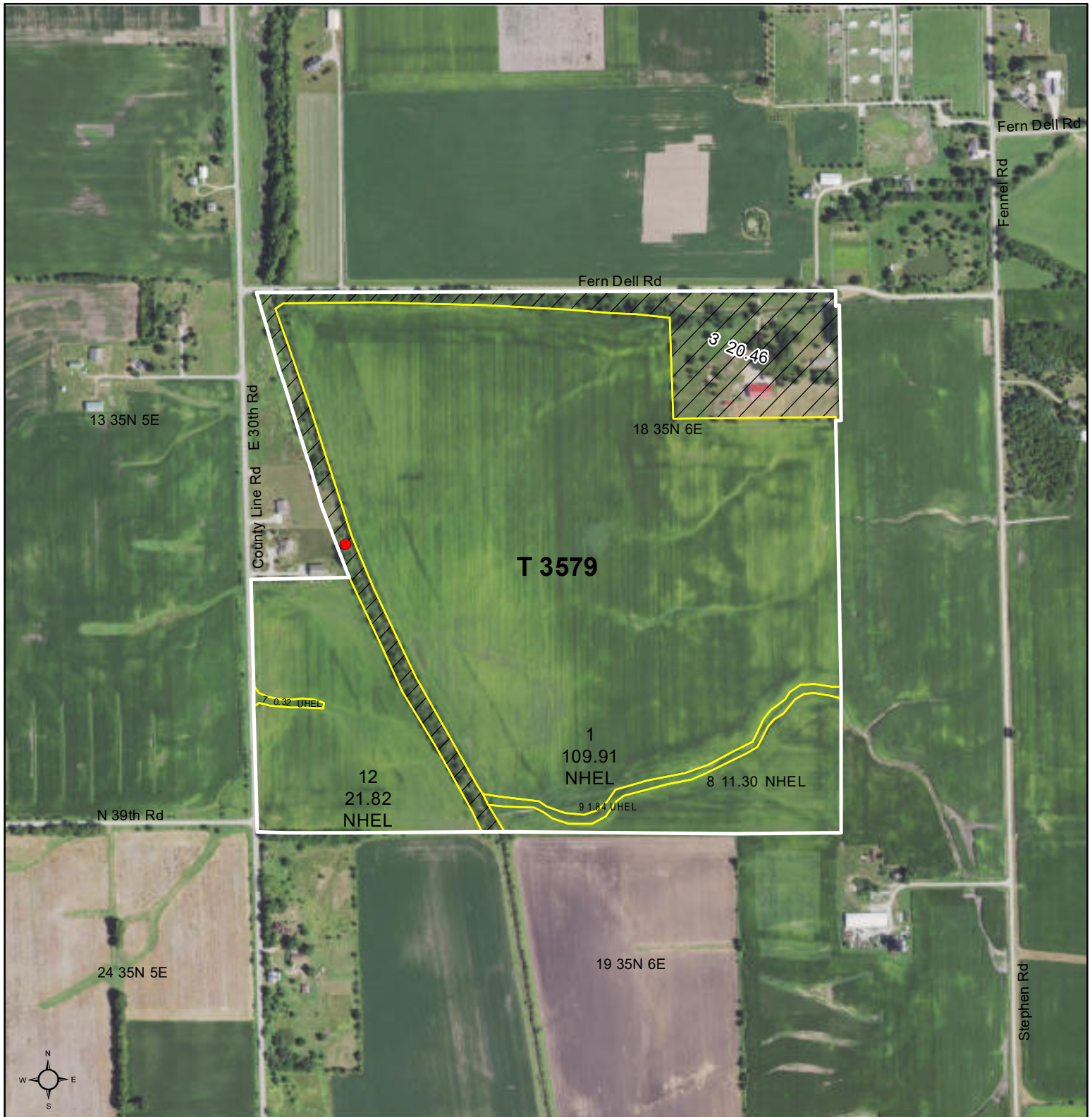
© AgriData, Inc. 2021

www.AgriDataInc.com



United States
Department of
Agriculture

Kendall County, Illinois



Common Land Unit

- Non-Cropland
- Cropland

Tract Boundary
plss_a_il_WMAS

0 285 570 1,140
Feet

2021 Program Year
Map Created December 01, 2020

Wetland Determination Identifiers

- Restricted Use
- Limited Restrictions
- Exempt from Conservation Compliance Provisions

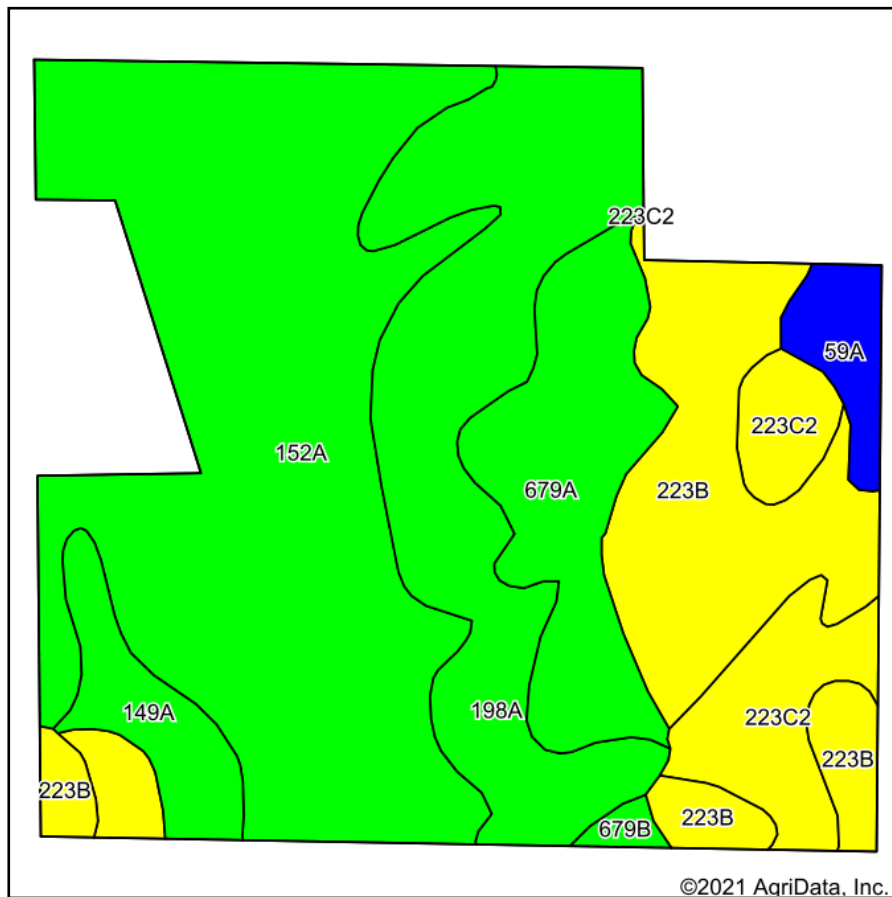
Tract Cropland Total: 145.19 acres

Farm **4281**
Tract **3579**

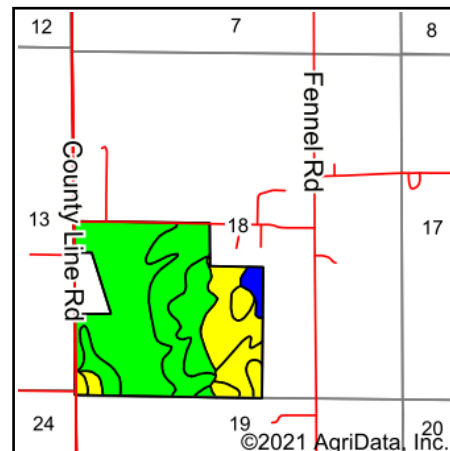
IL093_T3579

United States Department of Agriculture (USDA) Farm Service Agency (FSA) maps are for FSA Program administration only. This map does not represent a legal survey or reflect actual ownership; rather it depicts the information provided directly from the producer and/or National Agricultural Imagery Program (NAIP) imagery. The producer accepts the data 'as is' and assumes all risks associated with its use. USDA-FSA assumes no responsibility for actual or consequential damage incurred as a result of any user's reliance on this data outside FSA Programs. Wetland identifiers do not represent the size, shape, or specific determination of the area. Refer to your original determination (CPA-026 and attached maps) for exact boundaries and determinations or contact USDA Natural Resources Conservation Service (NRCS).

155 Acres MOL in Big Grove Twp.



Soils data provided by USDA and NRCS.



State: **Illinois**
 County: **Kendall**
 Location: **18-35N-6E**
 Township: **Big Grove**
 Acres: **155**
 Date: **10/12/2021**

PA
PRESTEGAARD
 AUCTIONEERING

Maps Provided By:
surety
 CUSTOMIZED ONLINE MAPPING
 © AgriData, Inc. 2021 www.AgriDataInc.com



Area Symbol: IL093, Soil Area Version: 17

Code	Soil Description	Acres	Percent of field	Il. State Productivity Index Legend	Subsoil rooting ^a	Corn Bu/A	Soybeans Bu/A	Wheat Bu/A	Oats Bu/A ^b	Sorghum ^c Bu/A	Alfalfa ^d hay, T/A	Grass-leg ume ^e hay, T/A	Crop productivity index for optimum management
152A	Drummer silty clay loam, 0 to 2 percent slopes	61.28	39.5%		FAV	195	63	73	100	0	0.00	5.64	144
198A	Elburn silt loam, 0 to 2 percent slopes	29.85	19.3%		FAV	197	61	74	94	0	0.00	5.77	143
**223B	Varna silt loam, 2 to 4 percent slopes	24.49	15.8%		FAV	**156	**50	**63	**78	0	**4.84	0.00	**115
679A	Blackberry silt loam, 0 to 2 percent slopes	15.99	10.3%		FAV	194	60	74	103	0	7.03	0.00	142
**223C2	Varna silt loam, 4 to 6 percent slopes, eroded	12.97	8.4%		FAV	**150	**48	**61	**75	0	**4.65	0.00	**110
149A	Brenton silt loam, 0 to 2 percent slopes	5.99	3.9%		FAV	195	60	74	105	0	0.00	5.64	141
59A	Lisbon silt loam, 0 to 2 percent slopes	3.65	2.4%		FAV	188	59	74	104	0	0.00	5.64	136
**679B	Blackberry silt loam, 2 to 5 percent slopes	0.78	0.5%		FAV	**192	**59	**73	**102	0	**6.96	0.00	**141
Weighted Average						185.2	58.8	70.8	93.9	*-	1.91	3.69	135.9

Table: Optimum Crop Productivity Ratings for Illinois Soil by K.R. Olson and J.M. Lang, Office of Research, ACES, University of Illinois at Champaign-Urbana. Version: 1/2/2012 Amended Table S2 B811

Crop yields and productivity indices for optimum management (B811) are maintained at the following NRES web site: <http://soilproductivity.nres.illinois.edu/>

** Indexes adjusted for slope and erosion according to Bulletin 811 Table S3

^a UNF = unfavorable; FAV = favorable

^b Soils in the southern region were not rated for oats and are shown with a zero "0".

^c Soils in the northern region or in both regions were not rated for grain sorghum and are shown with a zero "0".

^d Soils in the poorly drained group were not rated for alfalfa and are shown with a zero "0".

^e Soils in the well drained group were not rated for grass-legume and are shown with a zero "0".

Soils data provided by USDA and NRCS. Soils data provided by University of Illinois at Champaign-Urbana.

Illinois

Kendall

Report ID: FSA-156EZ

U.S. Department of Agriculture

Farm Service Agency

Abbreviated 156 Farm Record

FARM: 4281

Prepared: 11/5/21 9:16 AM

Crop Year: 2022

Page: 1 of 2

DISCLAIMER: This is data extracted from the web farm database. Because of potential messaging failures in MIDAS, this data is not guaranteed to be an accurate and complete representation of data contained in the MIDAS system, which is the system of record for Farm Records.

Operator Name	Farm Identifier	Recon Number
COMPASS FARMS INCORPORATED		2009 - 12

Farms Associated with Operator:

2492, 4114, 4200, 4295, 4515, 4556, 4557, 5125

ARC/PLC G/F Eligibility: Eligible

CRP Contract Number(s): None

Farmland	Cropland	DCP Cropland	WBP	WRP	EWP	CRP Cropland	GRP	Farm Status	Number of Tracts
165.65	145.19	145.19	0.0	0.0	0.0	0.0	0.0	Active	1
State Conservation	Other Conservation	Effective DCP Cropland	Double Cropped	MPL/FWP					
0.0	0.0	145.19	0.0	0.0					

ARC/PLC

PLC	ARC-CO	ARC-IC	PLC-Default	ARC-CO-Default	ARC-IC-Default
CORN , SOYBN	NONE	NONE	NONE	NONE	NONE

Crop	Base Acreage	PLC Yield	CCC-505 CRP Reduction
CORN	107.27	147	0.00
SOYBEANS	35.93	47	0.00
Total Base Acres:	143.2		

Tract Number: 3579 Description A9 Big Grove twp sec 18

FSA Physical Location : Kendall, IL

ANSI Physical Location: Kendall, IL

BIA Range Unit Number:

HEL Status: NHEL: no agricultural commodity planted on undetermined fields

Recon Number

Wetland Status: Wetland determinations not complete

2009- 11

WL Violations: None

Farmland	Cropland	DCP Cropland	WBP	WRP	EWP	CRP Cropland	GRP
165.65	145.19	145.19	0.0	0.0	0.0	0.0	0.0
State Conservation	Other Conservation	Effective DCP Cropland	Double Cropped	MPL/FWP			
0.0	0.0	145.19	0.0	0.0			

Crop	Base Acreage	PLC Yield	CCC-505 CRP Reduction
CORN	107.27	147	0.00
SOYBEANS	35.93	47	0.00
Total Base Acres:	143.2		

Owners: DAVIS, WILLIAM SR
ENGELHARDT, MICHAEL R

DAVIS, WILLIAM W III

Illinois
Kendall

U.S. Department of Agriculture
Farm Service Agency

FARM: 4281
Prepared: 11/5/21 9:16 AM
Crop Year: 2022
Page: 2 of 2

Report ID: FSA-156EZ

Abbreviated 156 Farm Record

DISCLAIMER: This is data extracted from the web farm database. Because of potential messaging failures in MIDAS, this data is not guaranteed to be an accurate and complete representation of data contained in the MIDAS system, which is the system of record for Farm Records.

Other Producers: None
